

COTTAGE PARK at



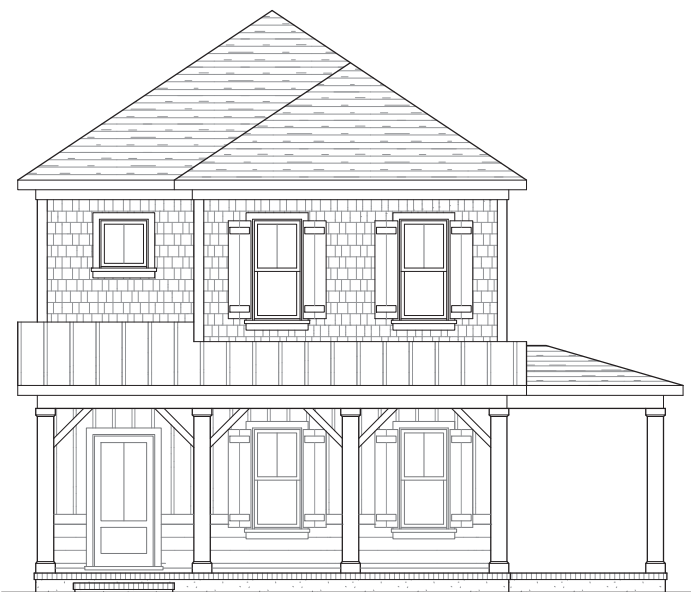
HERRINGTON HOMES

# The Tidal Marsh



4 bedrooms  
3.5 baths  
2 car garage  
2116 sq. ft.

Elevation A



Elevation B

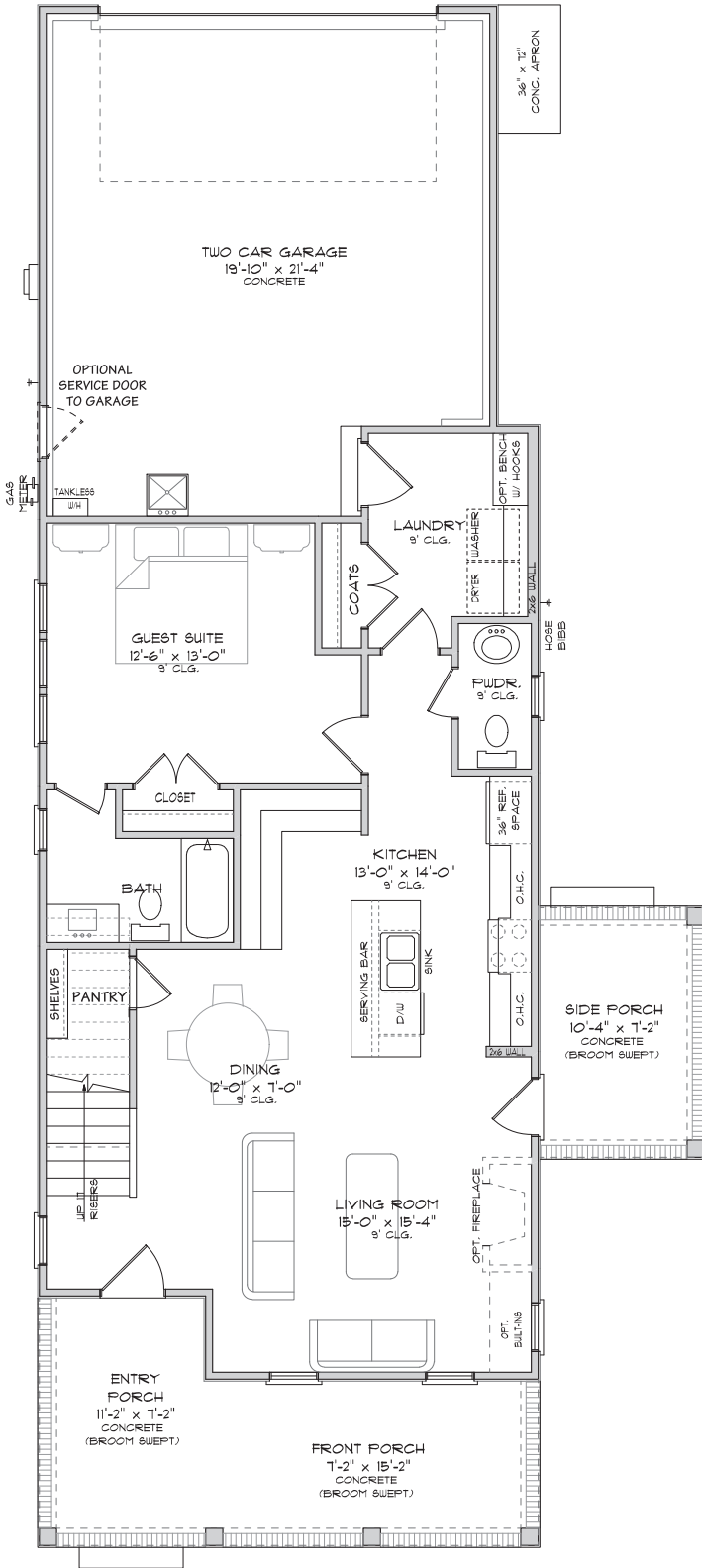


Elevation C

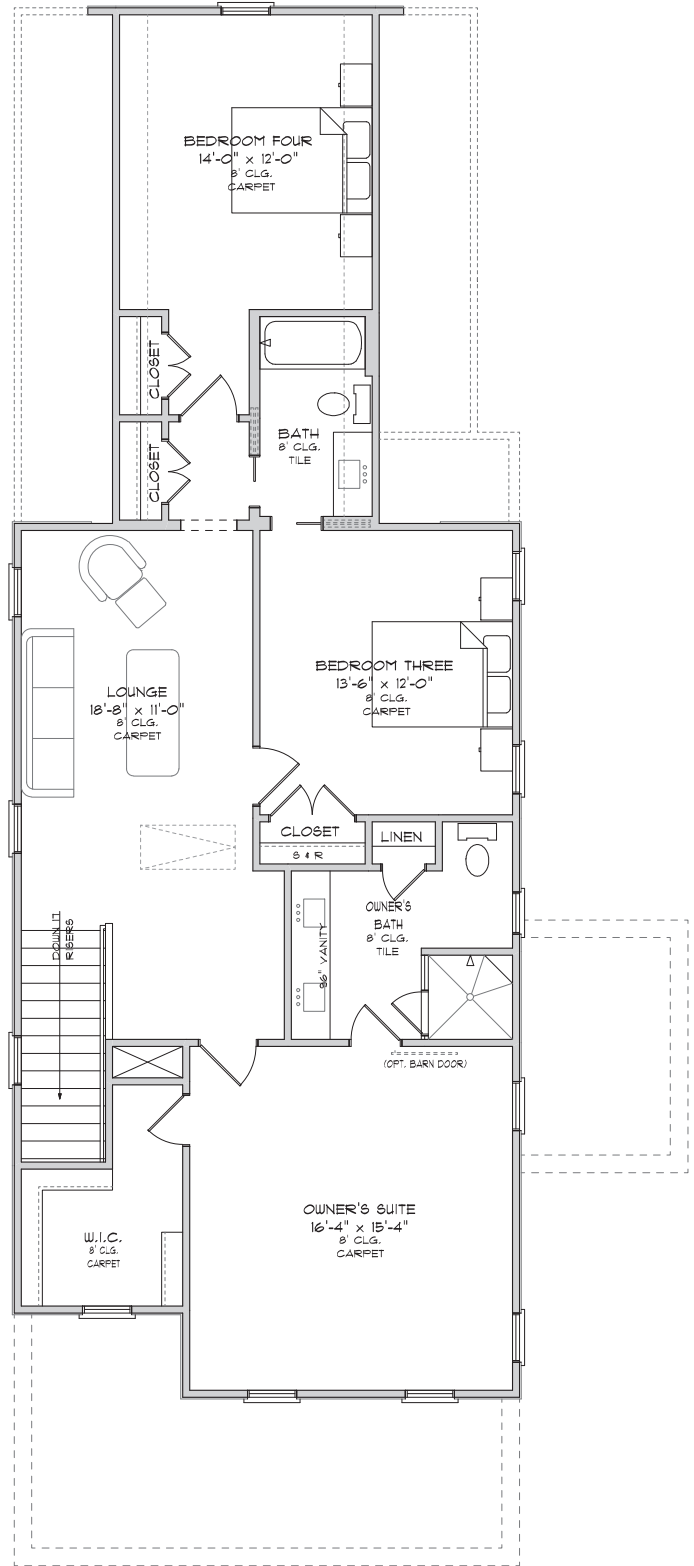
# The Tidal Marsh

by HERRINGTON HOMES

Plans and Specifications subject to change without notice.  
 \* See Sales Representative for Home Lot Pricing.



FIRST FLOOR PLAN



SECOND FLOOR PLAN

This sales plan shows several available options. See your Sales Representative for the additional cost of each option.

**Note:** All built-in benches, fireplaces, coffered ceilings, and barn doors, utility sinks and service doors in garage shown on plans are optional.